



Important!

Please give copies to
all LTR Mechanics

File in section: Cummins Power

Bulletin No: T-1000

Date: 08-07-14

TECHNICAL SERVICE BULLETIN

TSB Classification Description: Communication TSB Companywide Mandatory TSB

Subject:

Incorrect Configuration of Air Filter Housing

Manufacturer: Cummins Power Generation

Model : Cummins Power 350

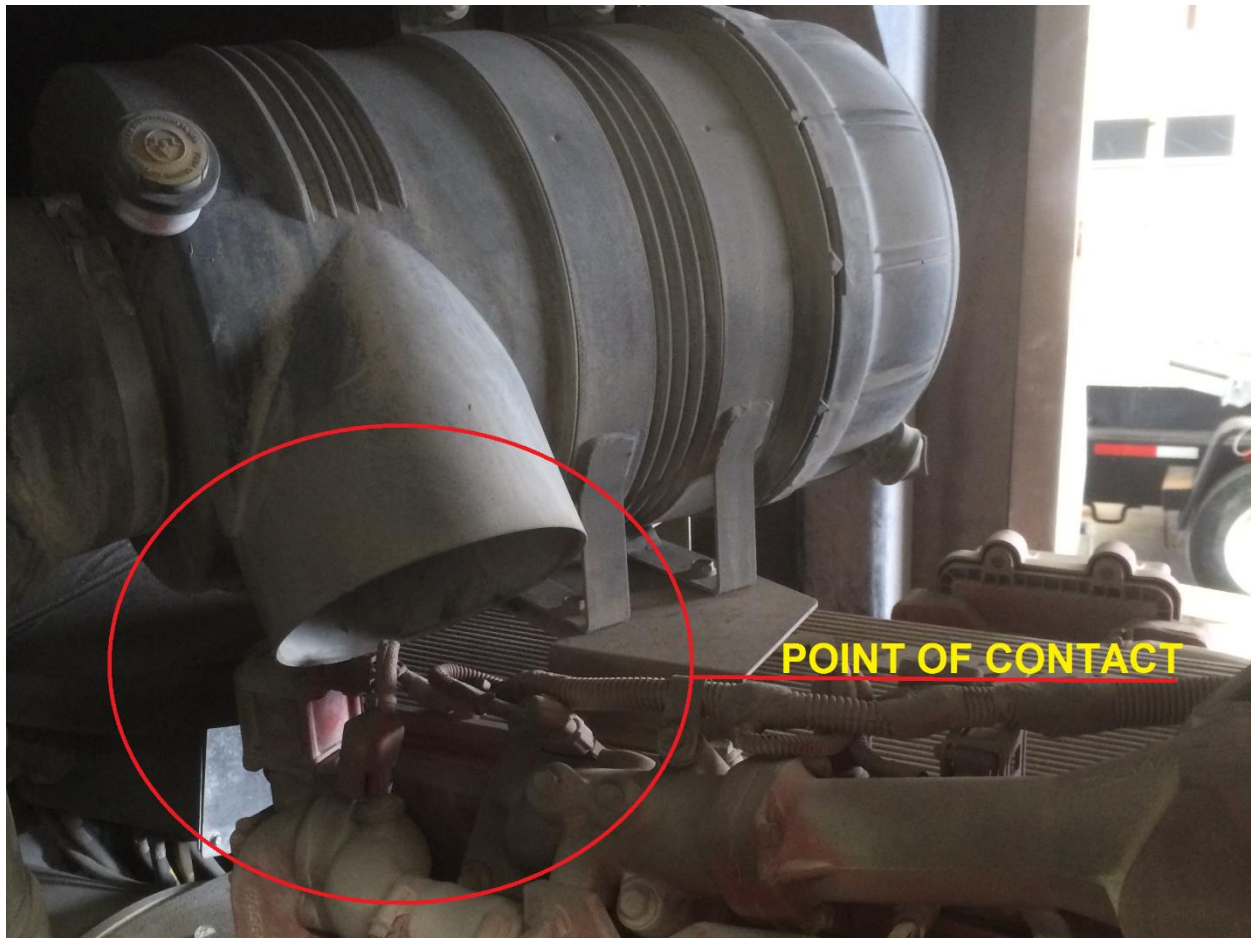
Model No: C300D6R-A040A033

Engine: Cummins QSM11-G4 10.8L

Tier Rating: U.S. EPA Tier III compliant

CONDITION:

These machines are equipped with a heavy duty 2-stage air cleaner that we are experiencing to be positioned incorrectly and are chafing the exhaust gas recirculation valve motor wiring harness & or connector. Please refer to the illustration below.





Important!

**Please give copies to
all LTR Mechanics**

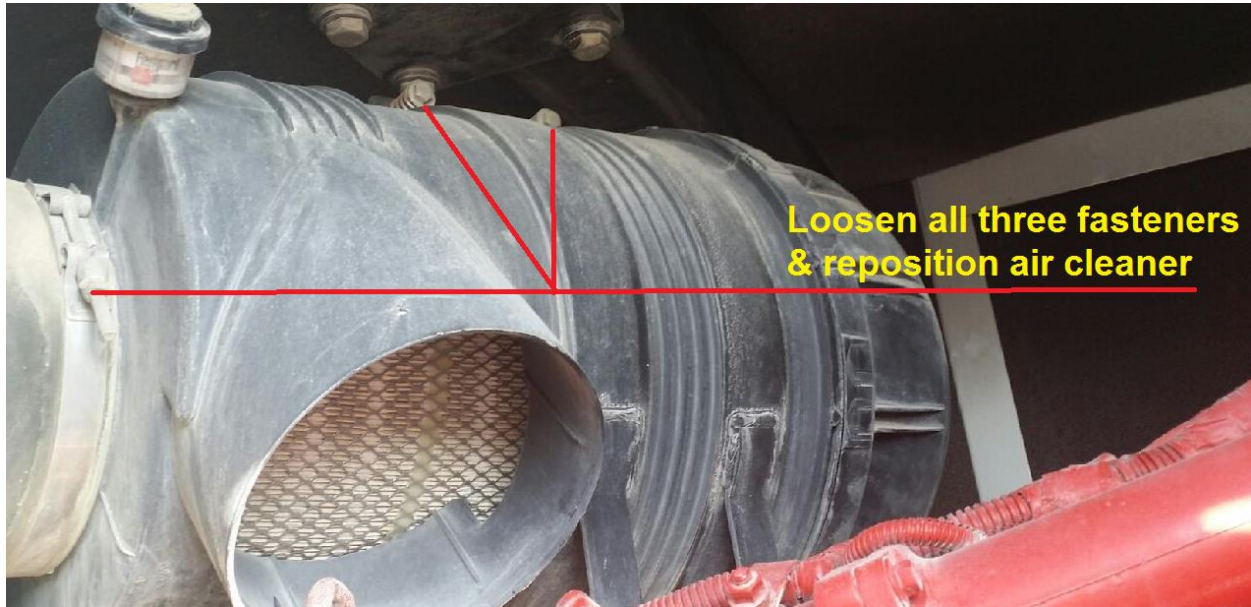
File in section: Cummins Power

Bulletin No: T-1000

Date: 08-07-14

ACTION TO BE TAKEN:

Step 1. Loosen the three fastener bolts in the illustration below and reposition the air cleaner to a position where contact with the exhaust gas recirculation valve motor wiring harness & or connector is no longer possible.



Step 2. With the air cleaner repositioned simply retighten the three fastener bolts. Please refer to the illustration below for the finished view.

NOTE: Be sure to clean out the air cleaner housing (dust ejector) when servicing air filters.





Important!

**Please give copies to
all LTR Mechanics**

File in section: Cummins Power

Bulletin No: T-1000

Date: 08-07-14

STEP 3. Visually inspect your completed work to ensure that the chaffing points have been eliminated.

STEP 4. Accuracy is crucial in successfully tracking the progress of this TSB campaign. Be sure to document this important TSB by creating an eMaint work order, type (TSB# T-1000 Cummins 350 Air Filter Issue) into your TSB work order work description. Please reference the picture below for an example.

Brief Description:	TSB# T-1000 Cummins 350 Air Filter Issue
Work Description:	TSB# T-1000 Cummins 350 Air Filter Issue
Comments:	

STEP 5. Be sure to install a TSB decal on the unit at the rear upper left corner of the cabinet door and write the TSB#, branch, technician's initials, date performed, and unit hours.

TECHNICAL SERVICE BULLETIN	
TSB# :	TSB# T-1000 Cummins 350 Air Filter Issue
PERFORMED AT:	Norman #30 BY: DP
DATE:	08/14/2014 HRS. 100000 Hrs.

PLEASE BE ADVISED!
This TSB is not intended to correct preexisting damage, please document and correct any related damage prior to performing this TSB.

