

SVS-15-08  
9/15/2008**TO: ALL ISUZU DISTRIBUTOR & DEALER SERVICE & PARTS PERSONNEL****SUBJECT: RADIATOR MOUNTING KIT UPDATE FOR TEREX T25 GENERATOR****MODELS AFFECTED**

4LE1PV-02 508 in Terex T25 mobile generator set.

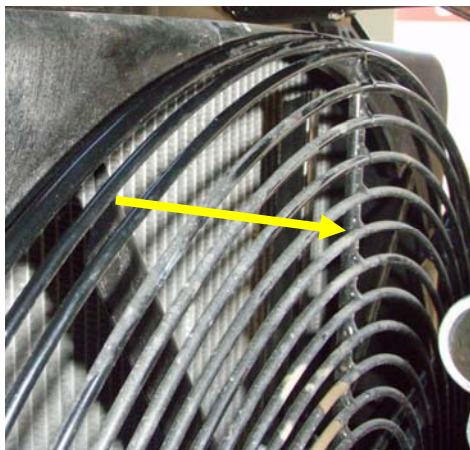
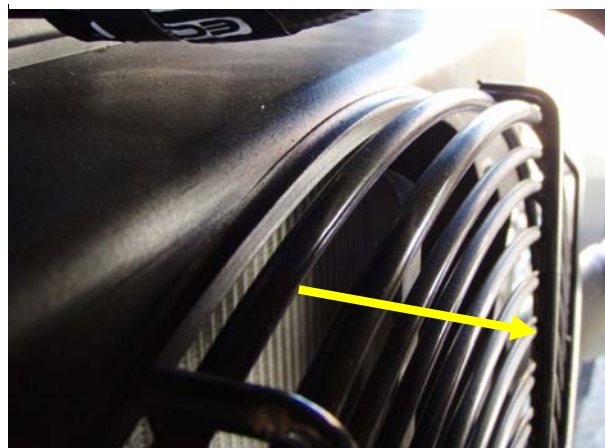
**BACKGROUND INFORMATION**

There has been an update to the radiator mounting kit for the Terex T25 mobile generator set with Isuzu 4LE1PV-02 508 power unit. There is potential for the radiator assembly to sag due to vibration; this may allow for less than 1/2" clearance between the cooling fan blade tip and fan guard/radiator assembly. If fan guard contact is made, fan breakage may occur which could lead to radiator damage and/or engine overheat.

**ACTION REQUIRED**

Terex customers with this issue will be notified directly by Terex. These customers will be responsible to contact their local authorized ISZAPT distributor/dealer. After a distributor/dealer receives the initial contact from the Terex customer, the distributor/dealer will be responsible to contact ISZAPT with the Terex generator serial number to seek approval of warranty repair. Failure to receive approval may cause denial of claim, as not all Terex T25 generator sets will receive this update.

Units that have previously been updated will have a new fan guard and do not require action. To determine if the unit has the new fan guard and update kit, please review the pictures below.

**Old Guard Type (support rib on inside)****New Guard Type (support rib on outside)**

**Important:** After the update kit is installed, check for 1/2" clearance from fan tip to fan shroud, fan guard, or any object that could contact the fan, completely around the fan.

## **ISUZU CONTACT**

Dominic Moya

734.582.9422

[dominic.moya@isza.com](mailto:dominic.moya@isza.com)

## **TIMELINE**

Customer has one year to have unit repaired. **All units must be repaired by 9/15/09.**

## **PARTS REQUIRED**

Update Kit GRP-F100784: includes bill of materials, updated parts and important installation instructions.

## **LABOR TIME**

2.0 hours at locally established warranty rates approved by ISZAPT. File a warranty claim online for the repair.

## **TRAVEL TIME**

Customer is responsible to bring their generator(s) to distributor/dealer location. Customer is responsible for travel expense or transportation of the unit to an authorized ISZAPT distributor or dealer.

## **IMPORTANT**

Distributor/Dealer must have the Isuzu engine serial number to file a warranty claim. The 4LE2 engine model's serial number is located (looking forward from the flywheel end of the engine) on the right front, top part of the cylinder block. It is between the first injection pump and front cover. The serial number is stamped into the block and consists of six numerical digits.

If you should have any questions please contact your Service Representative.

Best Regards,

*The ISZAPT Service Team*

Attachment