

To: ALL ISUZU POWERTRAIN DISTRIBUTORS AND DEALERS: SERVICE & WARRANTY PERSONNEL
Subject: P0602 DTC FOR TIER 4 FINAL 4LE2 ENGINES AND E-IDSS UPDATES

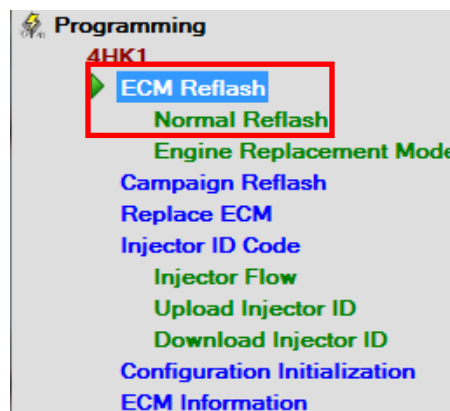
Service and Warranty Personnel,

Identified during recent E-IDSS programming, the T4F 4LE2 engine was found to set a P0602 DTC causing a hard fault DTC with an alarm resulting in engine deration and incorrect repairs. Component replacement is not required to address this DTC if found in the field. Please refer to the bulletin below to address the P0602 DTC.

The P0602 DTC is set as a result of incorrectly matching Injector QR codes and QR Trim. Injector QR codes and the QR Trim code are used together to refine the fueling mapping for proper engine operation and fuel injection. If there is a mismatch between the Injector QR code and the QR Trim, the P0602 DTC will set. This DTC has been found to set on the T4F 4LE2 engine as a result of old E-IDSS software which incorrectly programs the QR Trim code during ECU reflash using the E-IDSS Reflash-Normal mode.

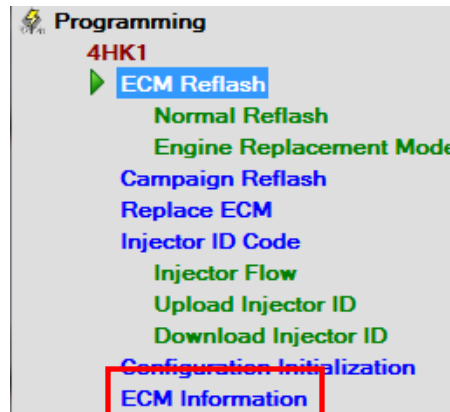
To address the P0602 DTC, complete the steps below to update the ECU calibration information while validating the information stored in the ECU.

1. Ensure that the E-IDSS is at the latest software level as noted in service bulletin **SVS-07-14**.
2. Reflash the ECU calibration using the E-IDSS and the Reflash – Normal function.

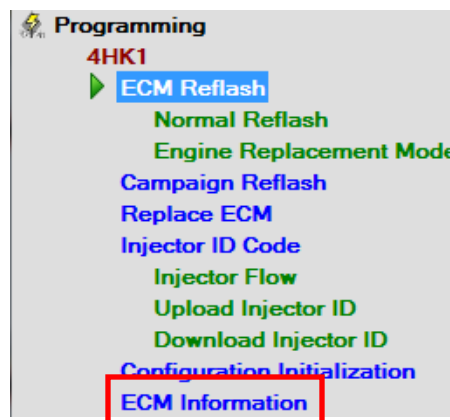


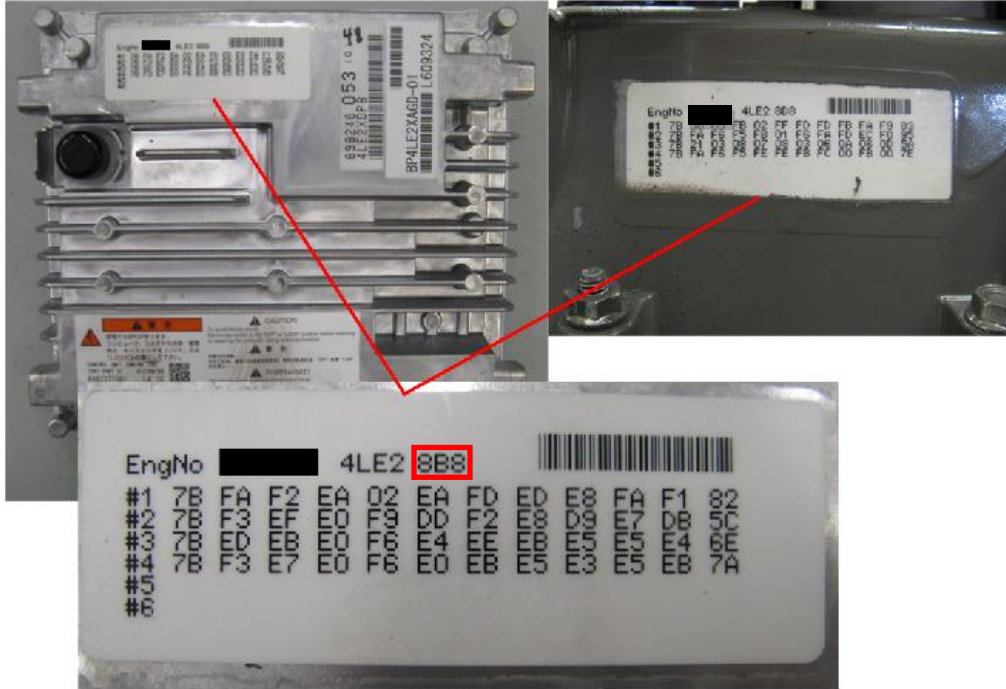
3. Once complete, power the unit down for 5 minutes before continuing.

4. Inspect the Injector QR codes engraved on the injector plastic connector and ensure that they match the Injector QR codes stored in the ECU. This is completed by selecting ECM Information through the Programming selection.



5. Validate the QR Trim code found on the Valve Cover Injector QR code label or, match the QR Trim code stored in the ECU. This information is also found under the ECM Information selection.





6. If the P0602 DTC is resolved, and the Injector QR code and the QR Trim code match, reevaluate the operation of the unit.
7. Once the P0602 DTC is resolved, return the unit to the customer.

Best Regards,

Dan Luke

Service Engineer Instructor