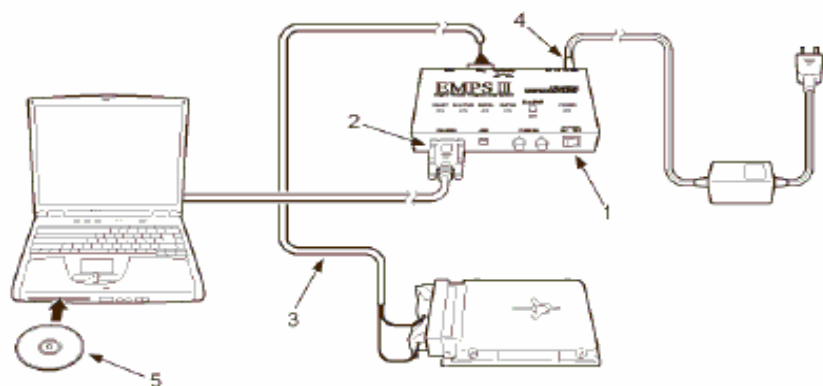


Connection Procedure

Power supply

Battery



1. Turn the POWER SW 1 to OFF.
2. Connect the RS-232C cable 2.
3. Connect the ECM harness 3.
4. Connect the AC adapter 4.
5. Insert the Data CD 5 into the PC.

Exit

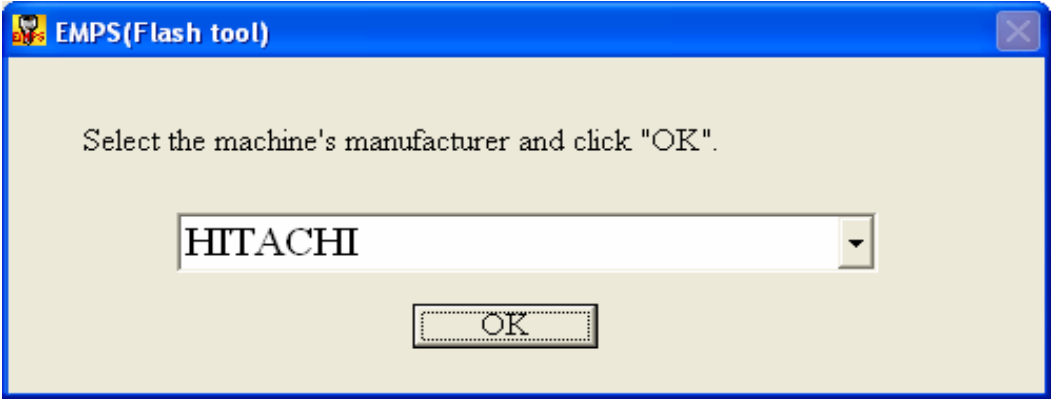
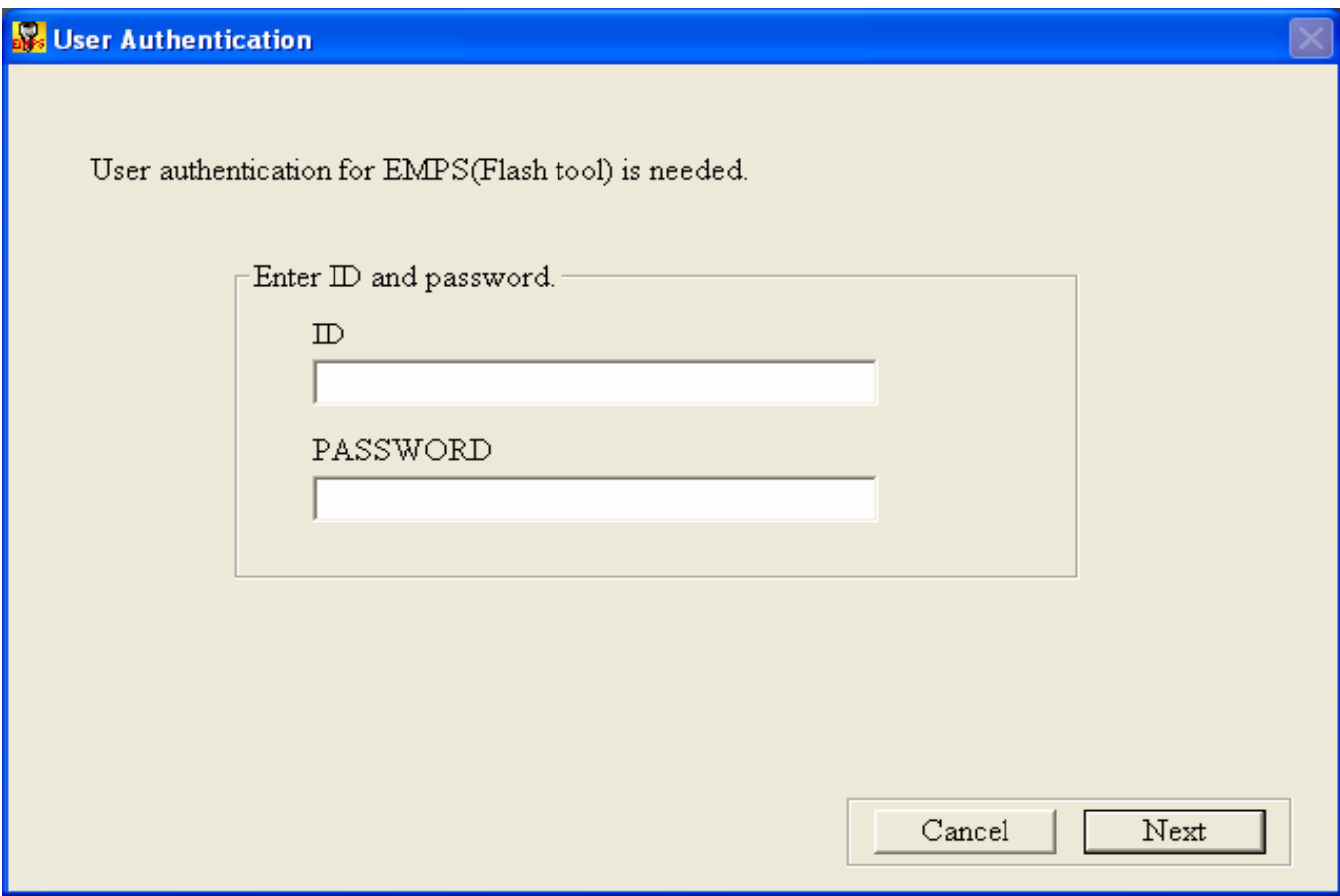
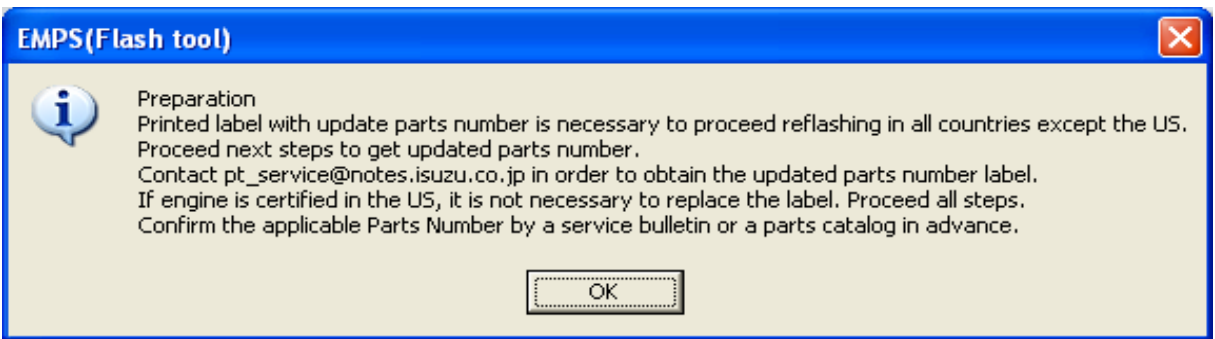
Next

MODE SELECT

- Normal Update
Standard option. Parts number to be updated is searched automatically based on current parts number.
- Engine replacement mode
Use this to change the Parts Number to the old-type ones with hardware modification.
- Enforce Update
Arbitrary parts number can be selected using special password which is provided by ISUZU MOTORS Limited.
- Campaign Update
Use this mode when Equipment Manufacturer or ISUZU announces "Campaign notice".

Exit

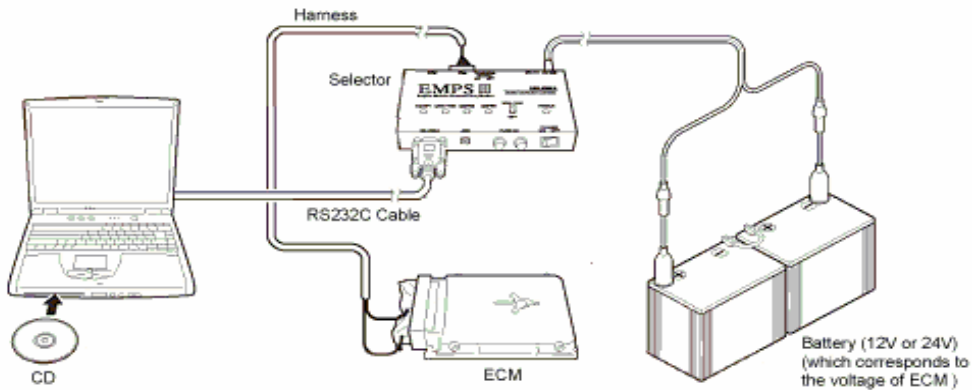
Next



Connection Confirmation

Power supply

Battery



**For power supply, use the same voltage as supply voltage to ECM.
Do not use a battery cable and AC adapter at the same time.**

Setting of communication port

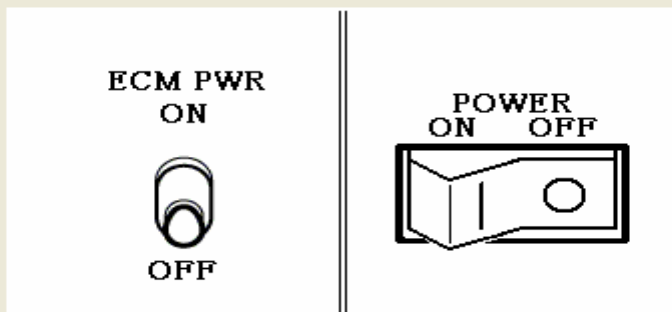
Communications port: COM

Bit / sec.: (bps)

- * Are ECM, Selector and PC are connected properly?
- * Insert the EMPS(Flash tool) Software CD.
- * For power supply, use the same voltage as supply voltage to ECM. Do not use a battery cable and AC adapter at the same time.
- * Configure the setting of COM port.
- * Change the bit rate if necessary. (Default value: 38400 bps)

Cancel

Next



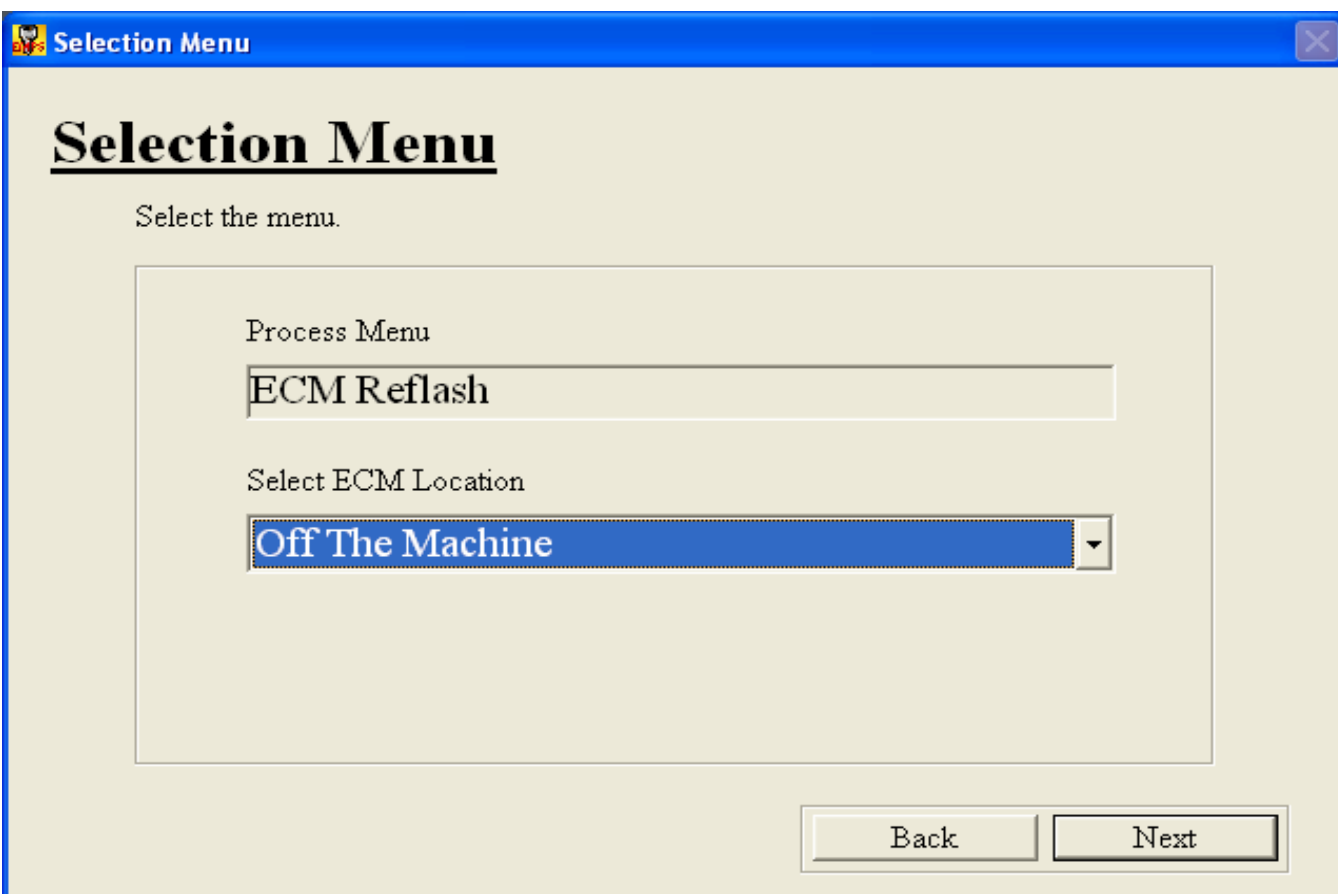
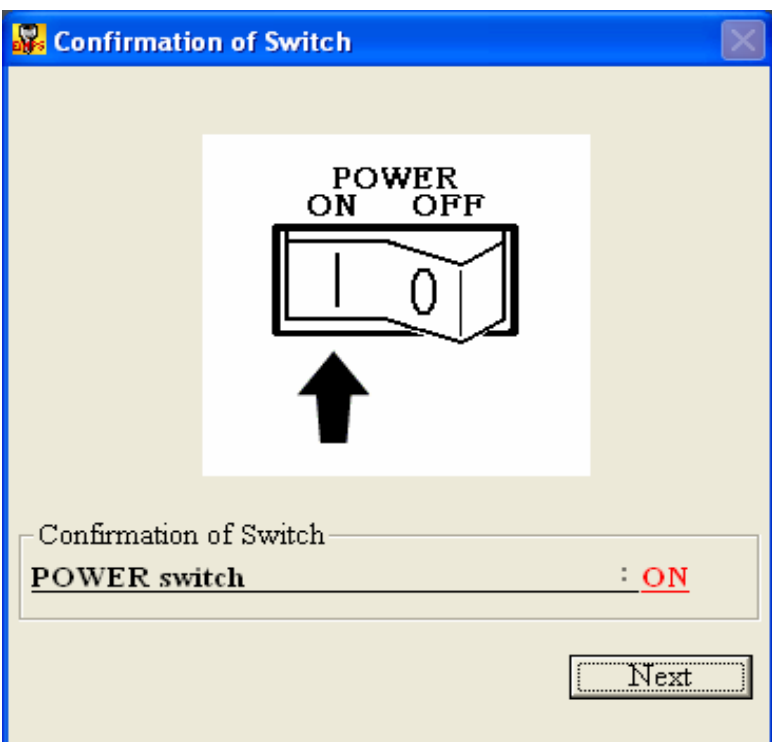
Confirmation of Switch

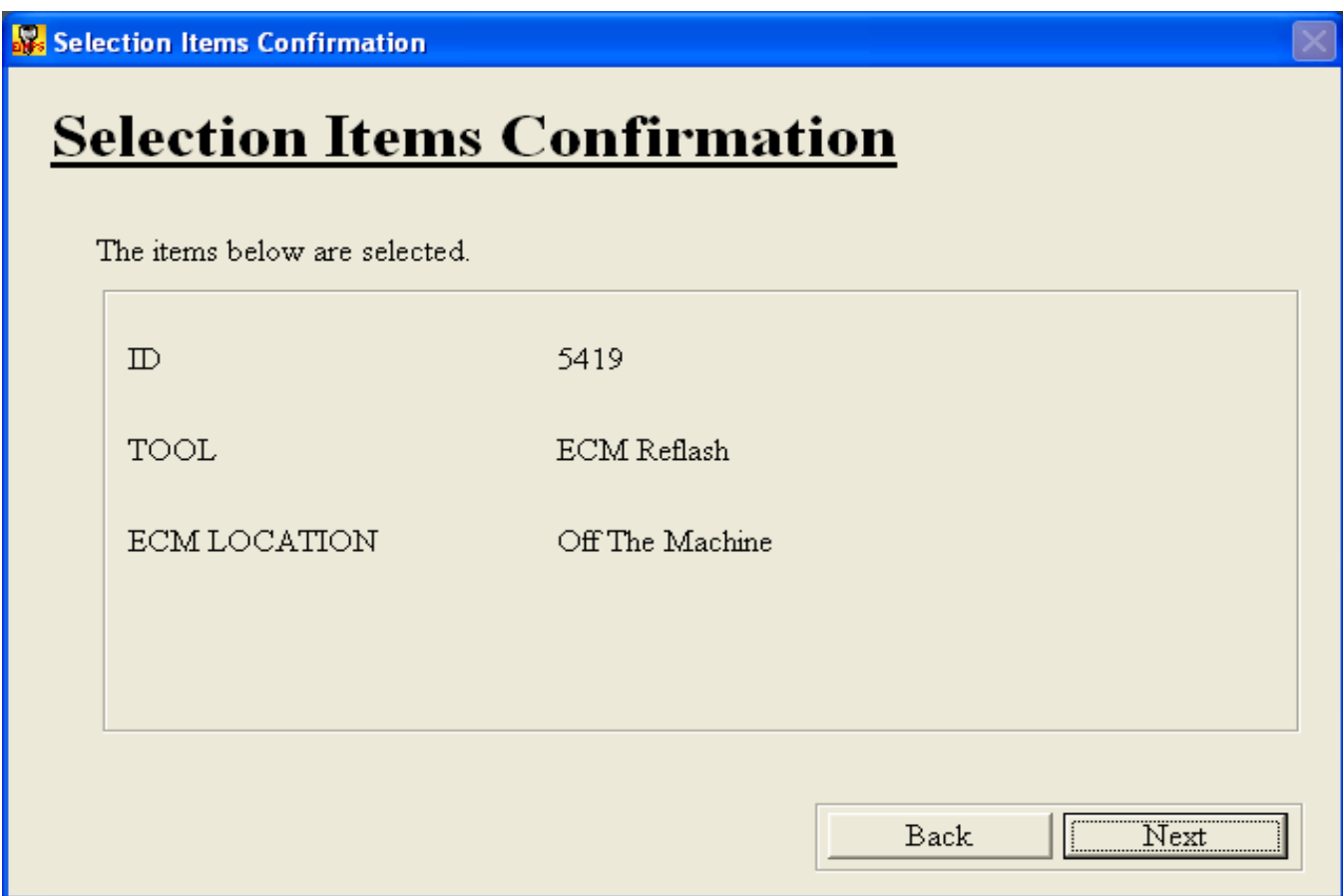
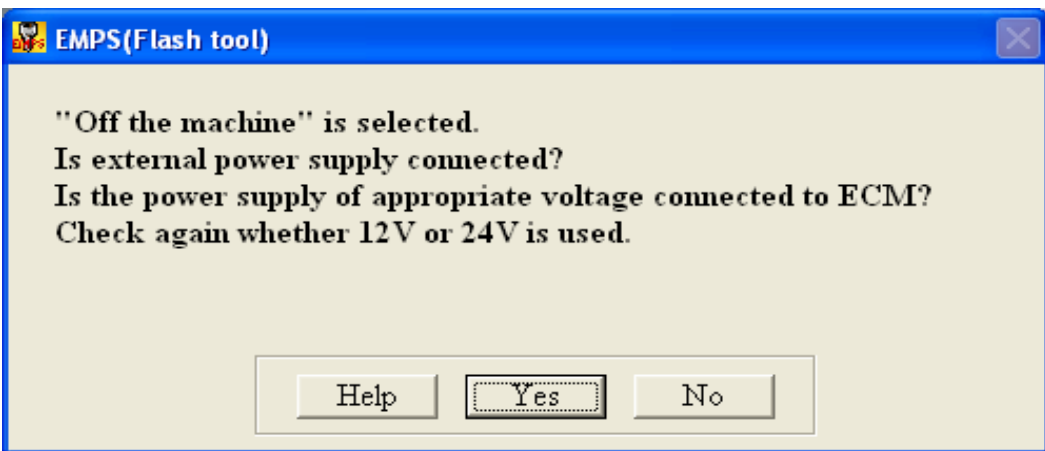
Check the following conditions.

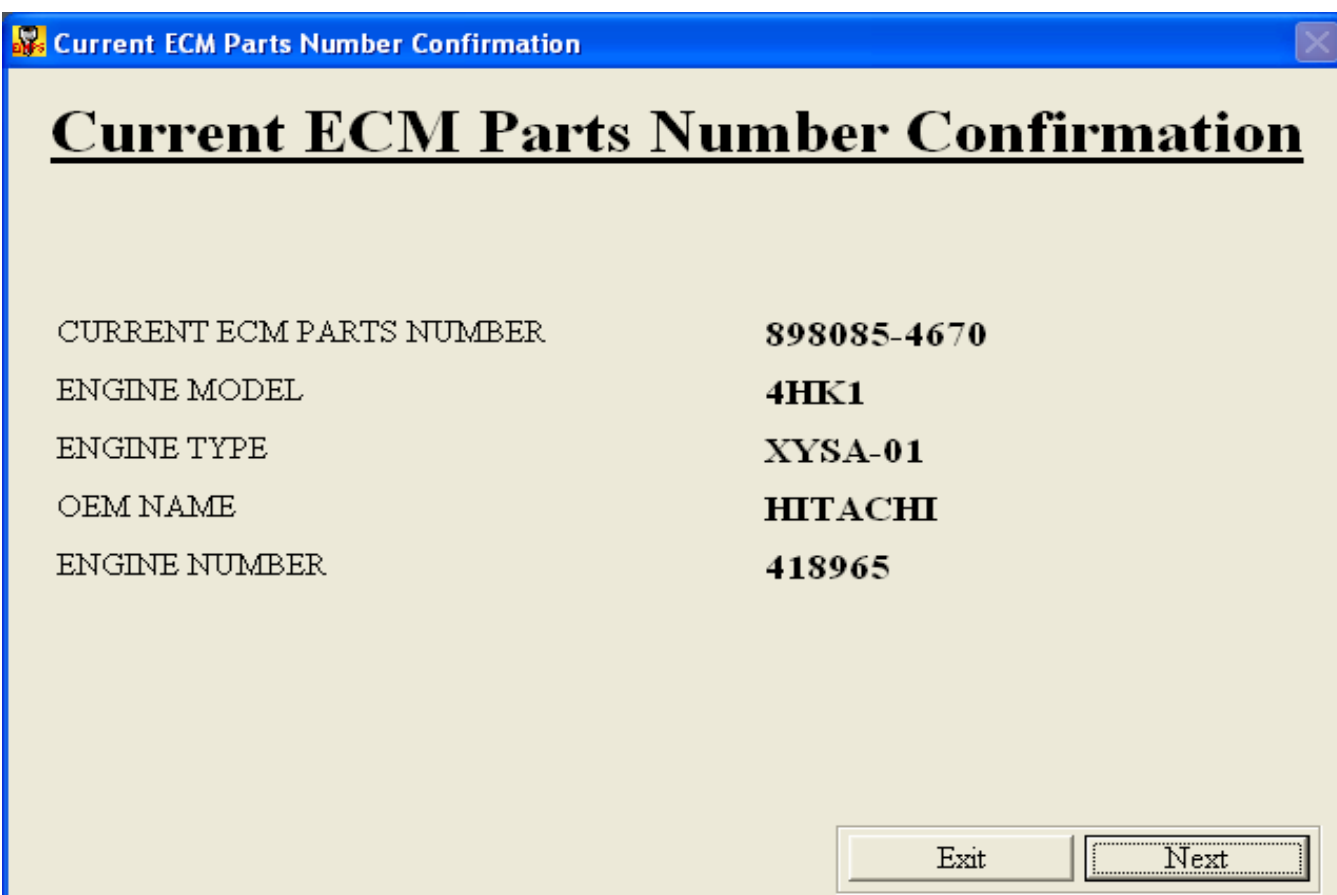
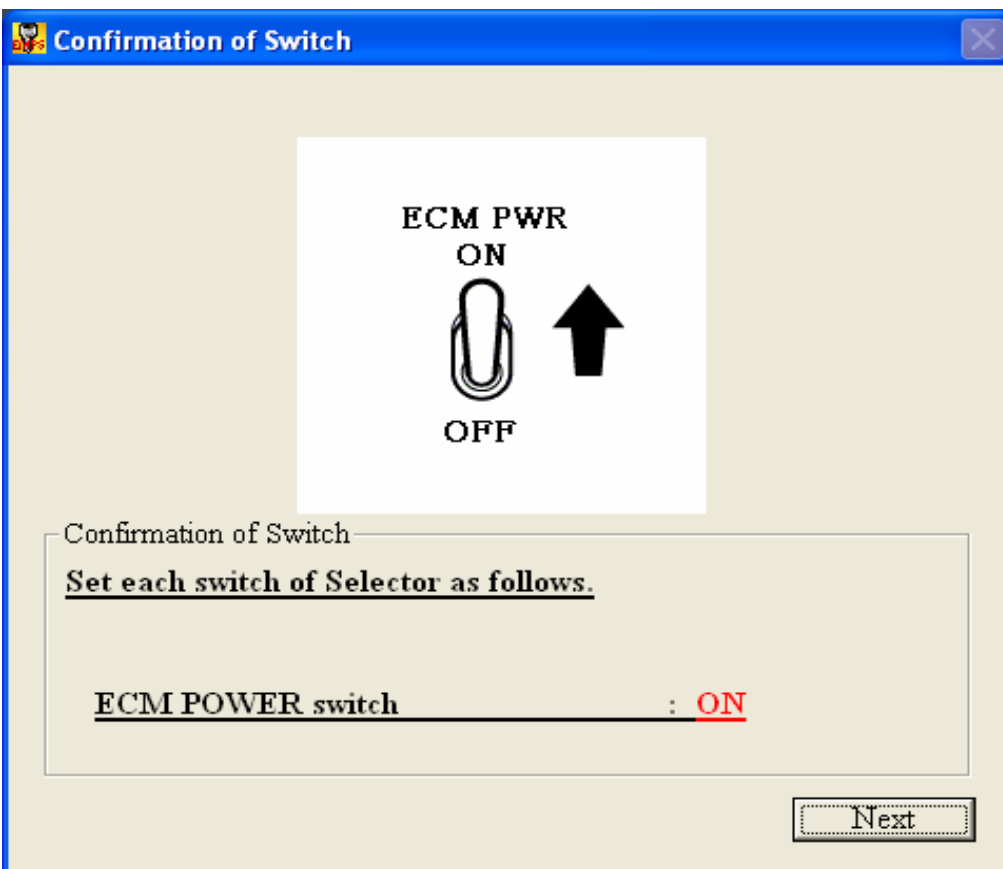
ECM POWER switch : OFF

POWER switch : OFF

Next







Downward compatible information with hardware modification

Downward compatible information with hardware modification

	Current Parts Number		Hardware Changed Parts Number	Change Reason
Item1	898085-4670	>>	898080-6650	Disconnect the wiring, and return the fuel filter to its original position.

<<Attention>>
Confirm the machine manufacturer's information on hardware modifications.
* Be sure to perform the modification to downward compatible with hardware modification after completing hardware modification. Failing to modify the software (reflashing) after replacing the hardware, an error code will appear or affect machine functions.

* In case that downward compatible information has two or more items, perform hardware replacement and software modification (reflashing) for each item.
Be sure to proceed to the next item after completing an item.
A guidance for each item will appear in this program. Do not fail to follow that.

Perform reflash to the Parts Number with hardware modification following the above mentioned cautions.

Exit Next

Hardware Change Confirmation

Hardware Change Confirmation

("898085-4670">>"898080-6650")

Confirmed the machine manufacturer's information on modifications.

Refer to the wiring diagram, and confirmed that wirings and sensors are adapt to downward compatible.

<<Attention>>
Failing to the above mentioned operations, an error code will light.
Be sure to proceed to the next step (procedure) after completing the above mentioned operations.

Wiring diagram Exit Next

Reflashing ECM Parts Number

Reflashing ECM Parts Number

Are you sure to reflash this parts number?
To reflash the number, click the "Next" button.

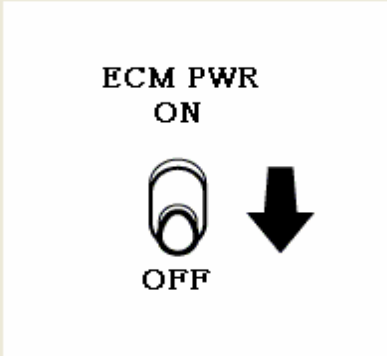
***Be sure to perform the modification to downward compatible with hardware modification after completing hardware modification. Failing to modify the software (reflashing) after replacing the hardware, an error code will appear or affect machine functions.**

CURRENT ECM PARTS NUMBER	898085-4670
	↓ ↓
NEW ECM PARTS NUMBER	898080-6650

Downward compatible with hardware modification

Exit Back Next

Confirmation of Switch

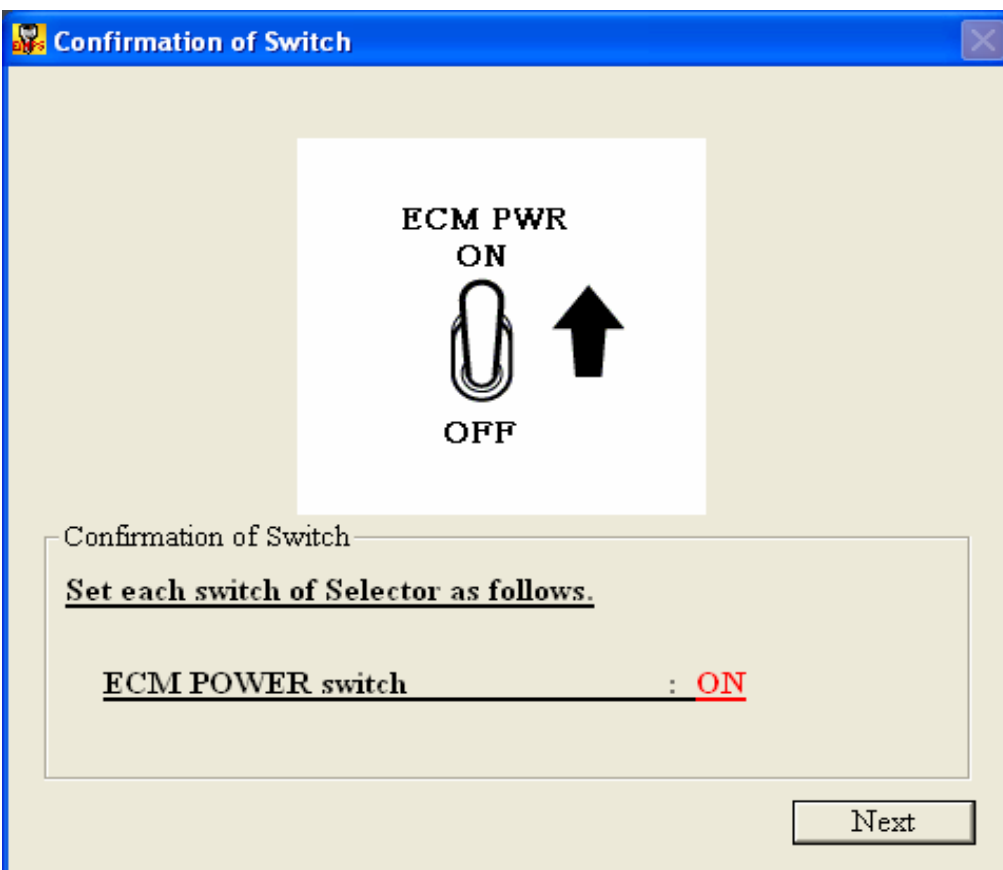


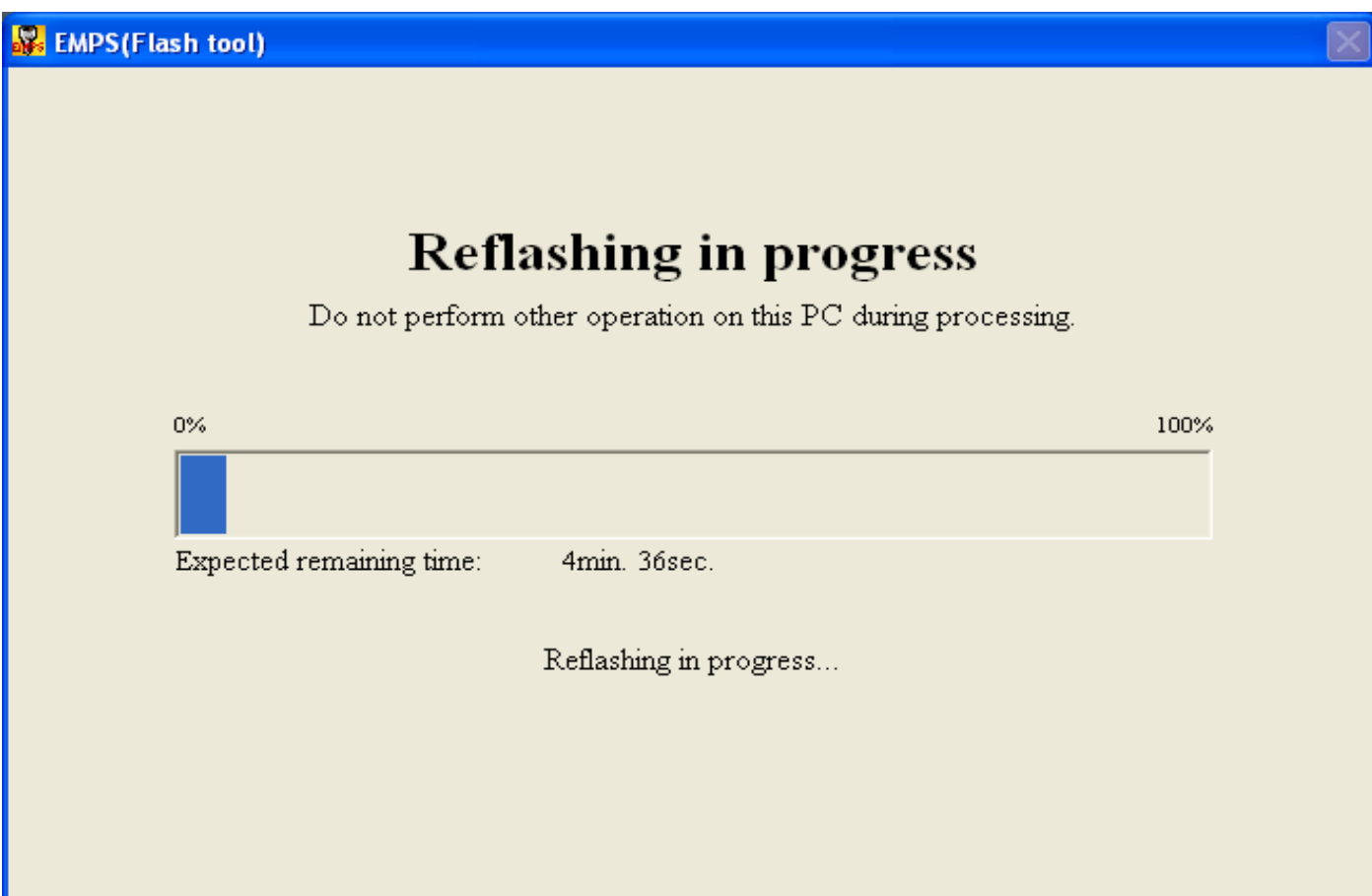
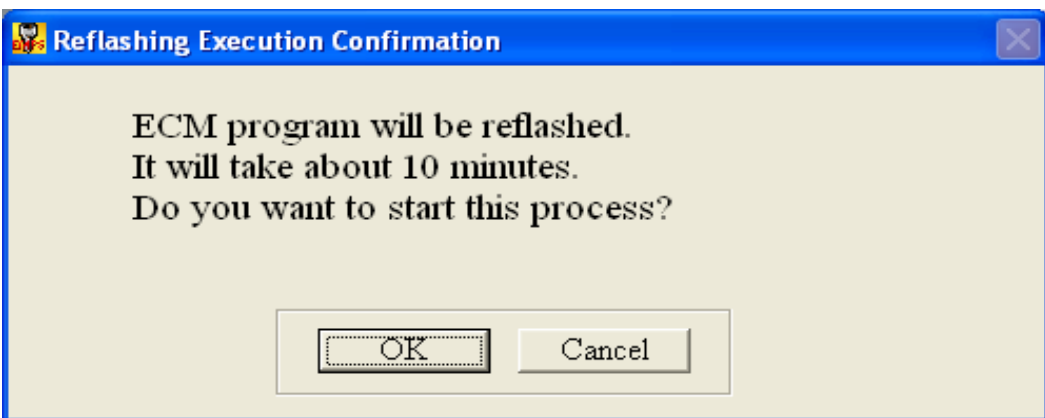
Confirmation of Switch

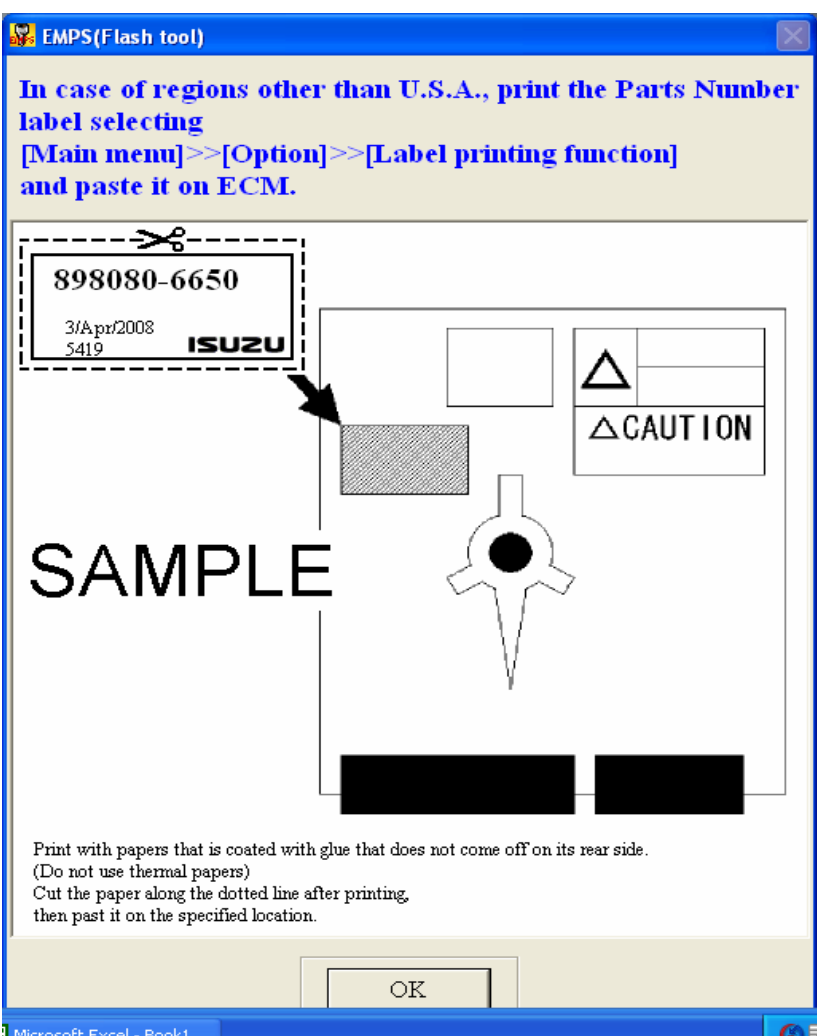
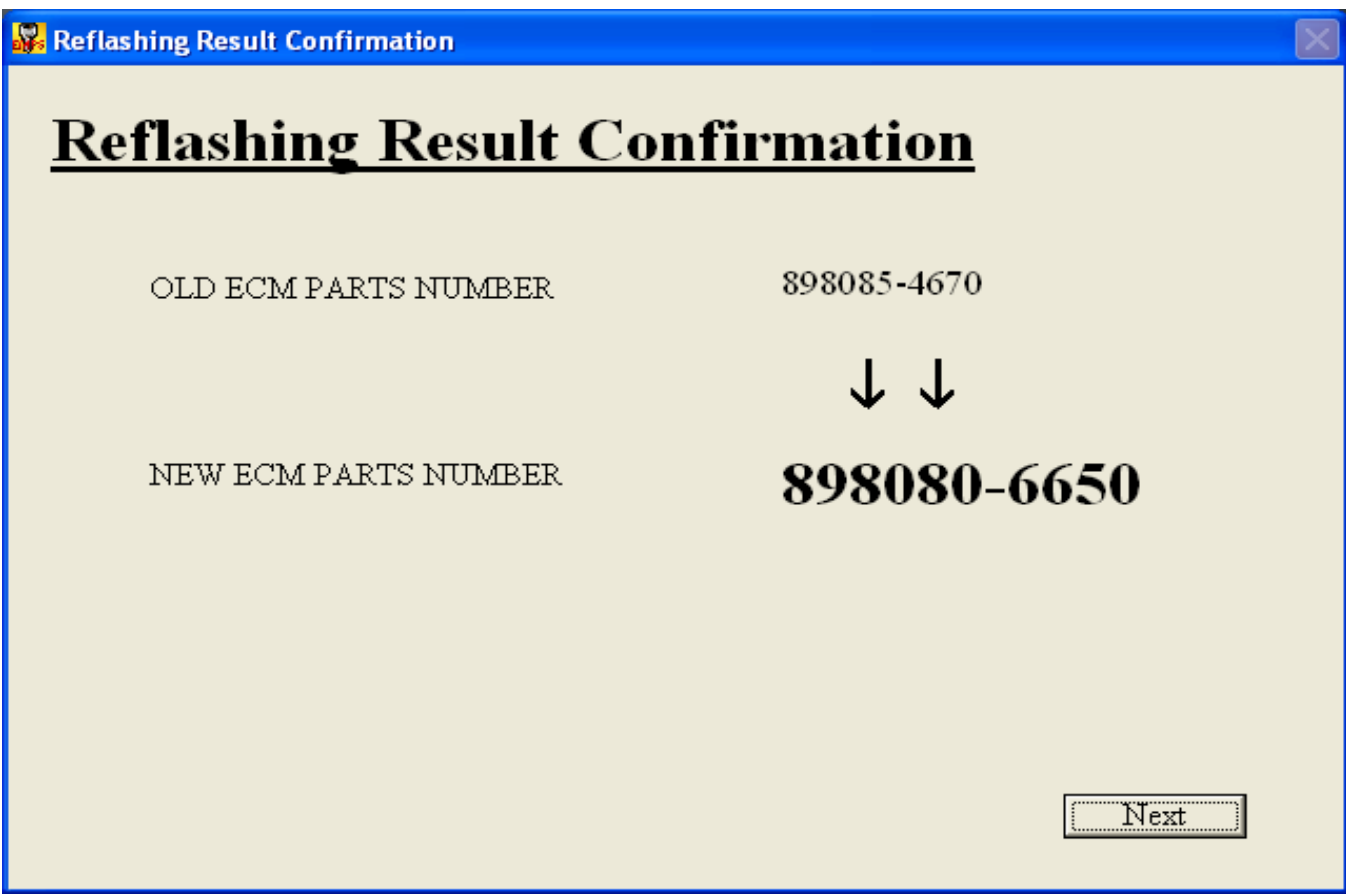
Set each switch of Selector as follows.

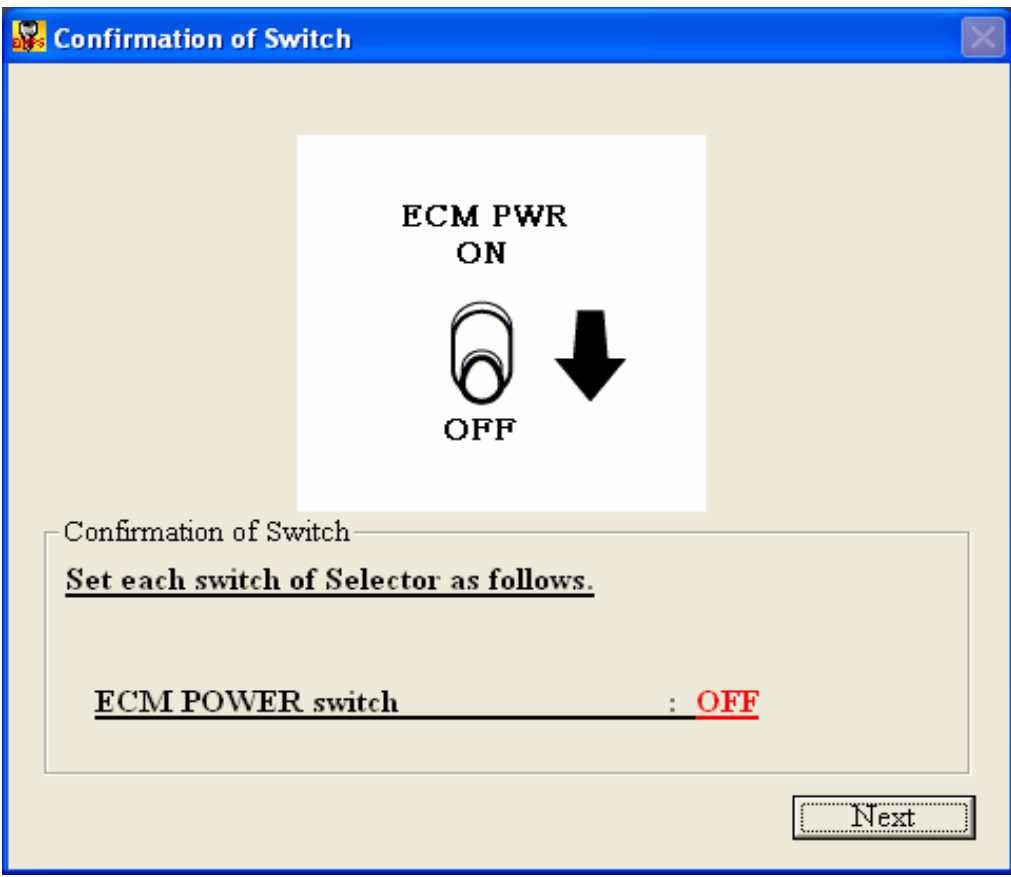
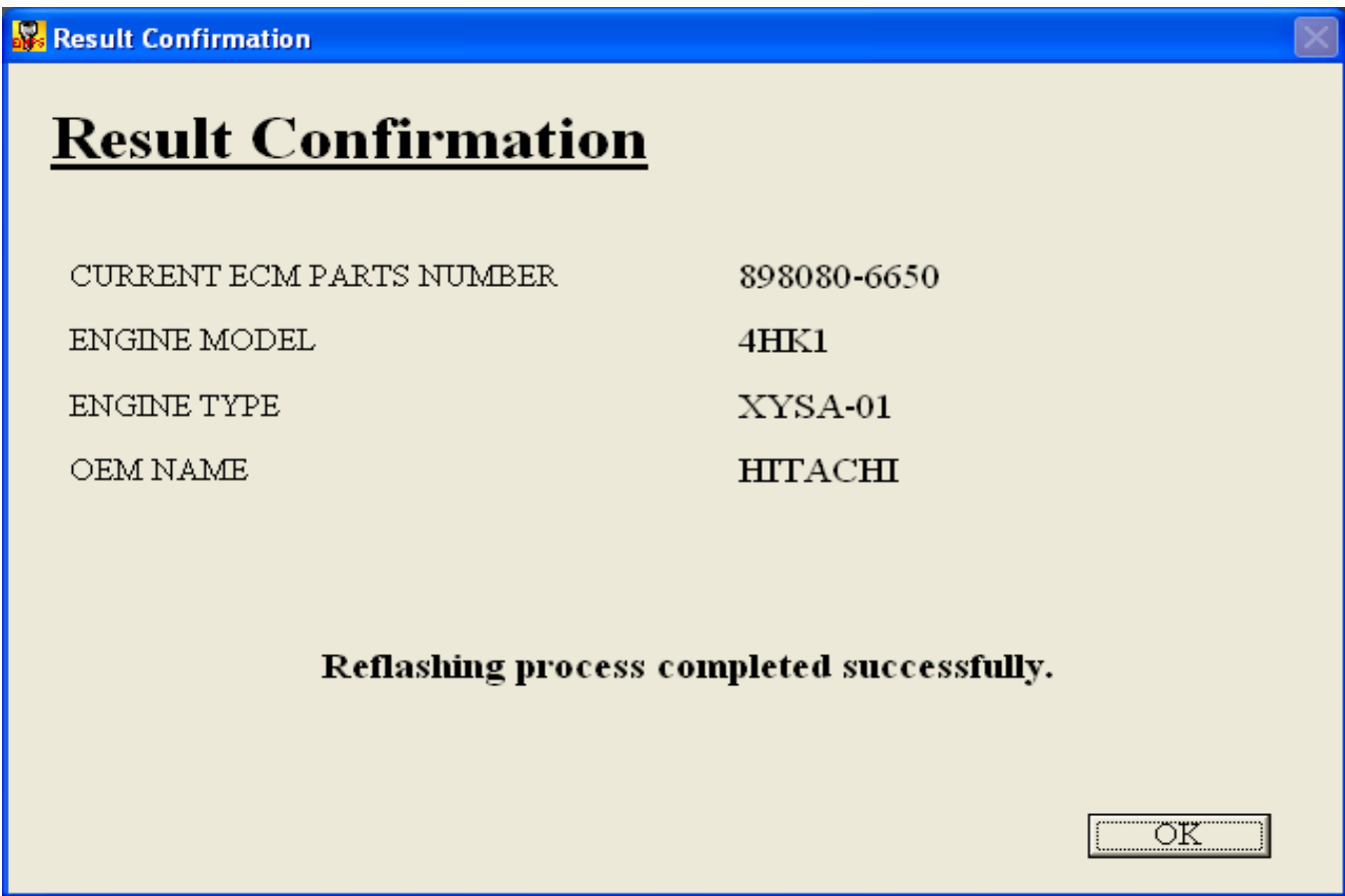
ECM POWER switch : **OFF**

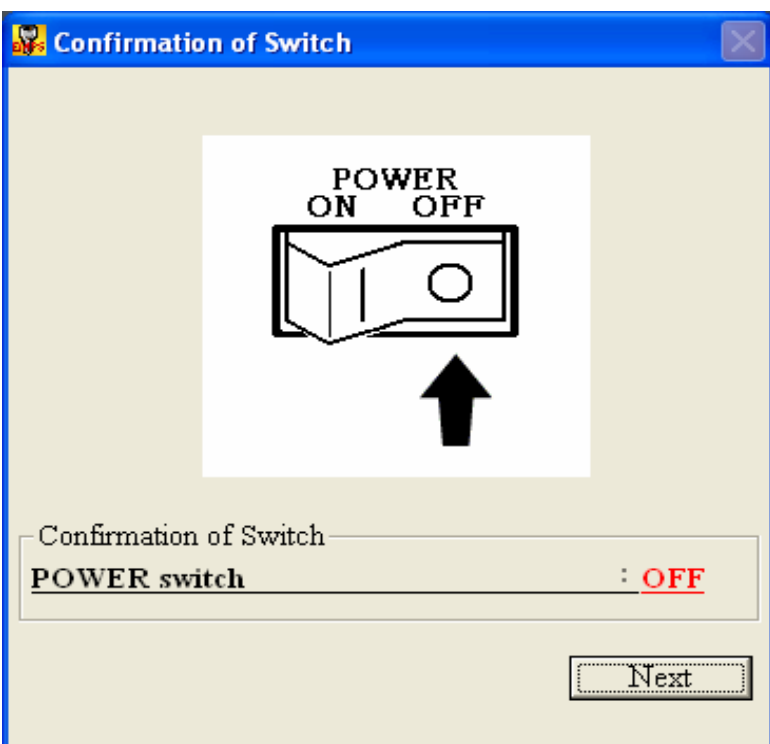
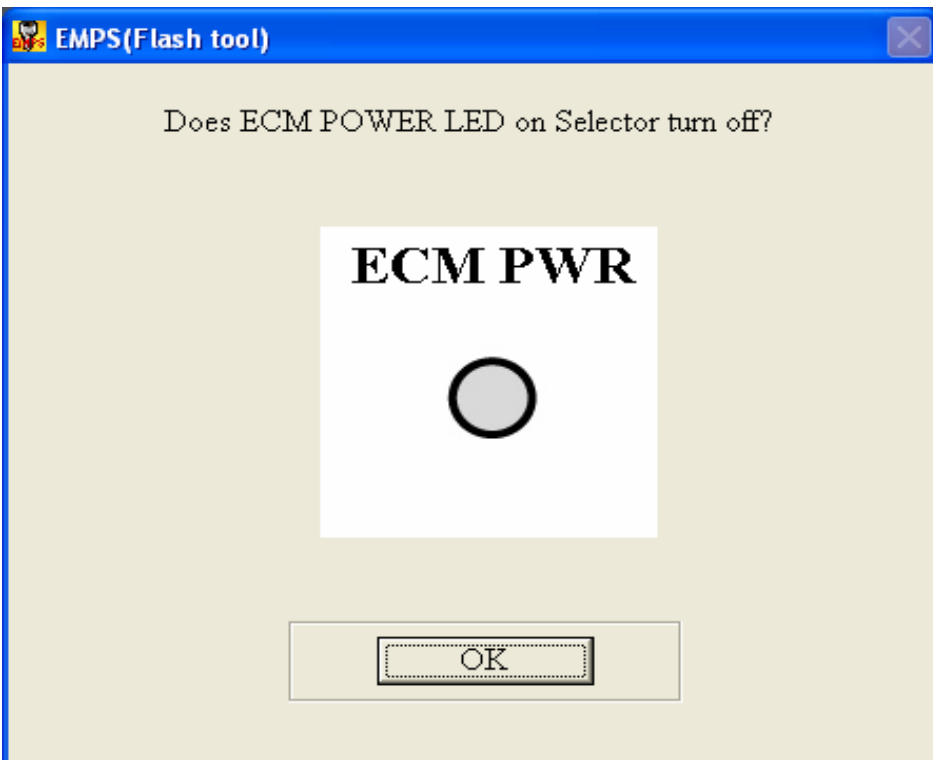
Next











Removal Procedure

Removal Procedure

Power supply Battery

1. Turn the POWER SW 1 to OFF.
2. Remove the AC adapter 4.
3. Remove the RS-232C cable 2.
4. Remove the ECM harness 3.
5. Eject the Data CD 5.

Next

EMPS(Flash tool)

Install the vehicle/equipment side harness to ECM and clear memory in ECM.
The engine will not operate properly unless memory is cleared.
* Click [OK] button after preparation is done.

OK

ignore this message

Clearing Memory

Clearing ECM Memory

Perform the following steps to clear memory if "Vehicle (Construction equipment/machine)" is equipped with ECM. The engine will not operate properly unless memory is cleared.

- (1) Turn the ignition key to ON.
- (2) Turn the Diag SW to ON.
- (3) Turn the Memory Clear SW to ON.
- (4) Wait 5 seconds.
- (5) Turn the Memory Clear SW to OFF.
- (6) Turn the Diag SW to OFF.
- (7) Turn the ignition key to OFF.
- (8) Wait 10 seconds. (Do not turn the ignition key to ON.)
- (9) Turn the ignition key to ON.
- (10) Turn the Diag SW to ON.
- (11) Check the engine.

* If the vehicle etc. is not equipped with ECM, install the ECM to vehicle and clear memory, performing above steps.

Clearing memory is completed.