

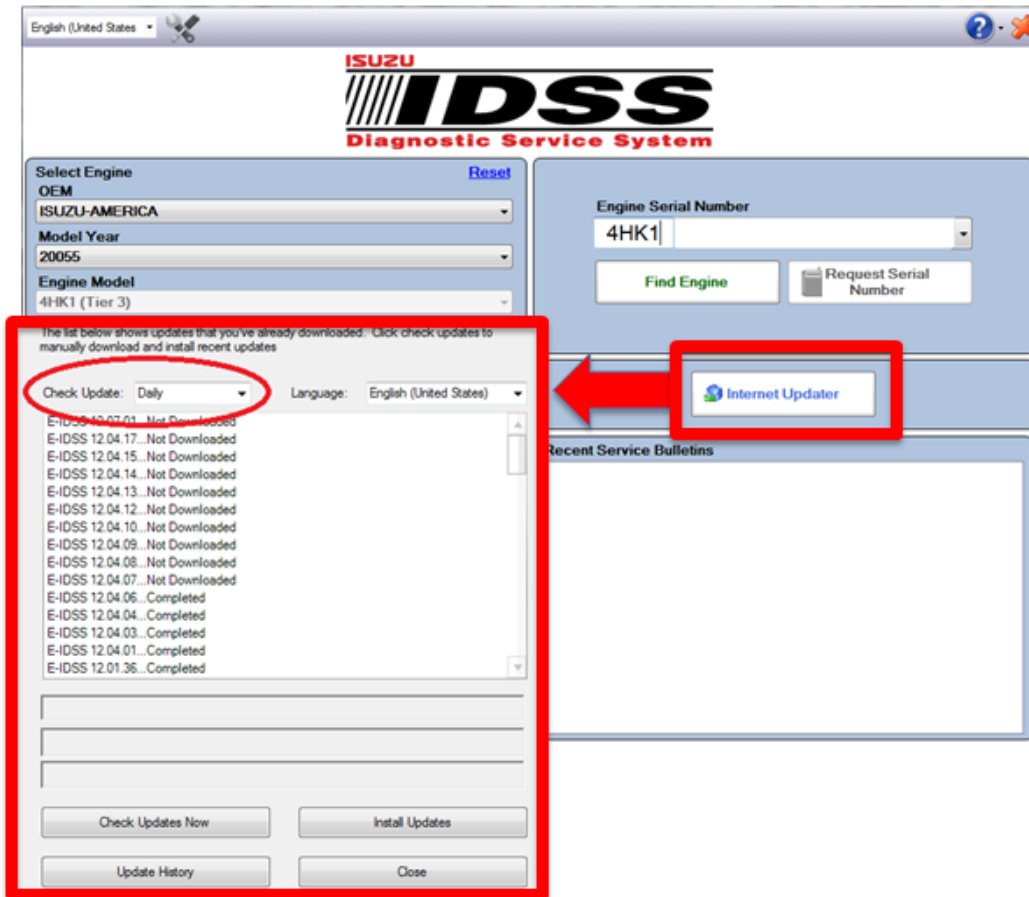
**TO: ALL ISUZU POWERTRAIN DISTRIBUTORS AND DEALERS: SERVICE & WARRANTY PERSONNEL**  
**SUBJECT: E-IDSS SOFTWARE UPDATES**

**Service and Warranty Personnel,**

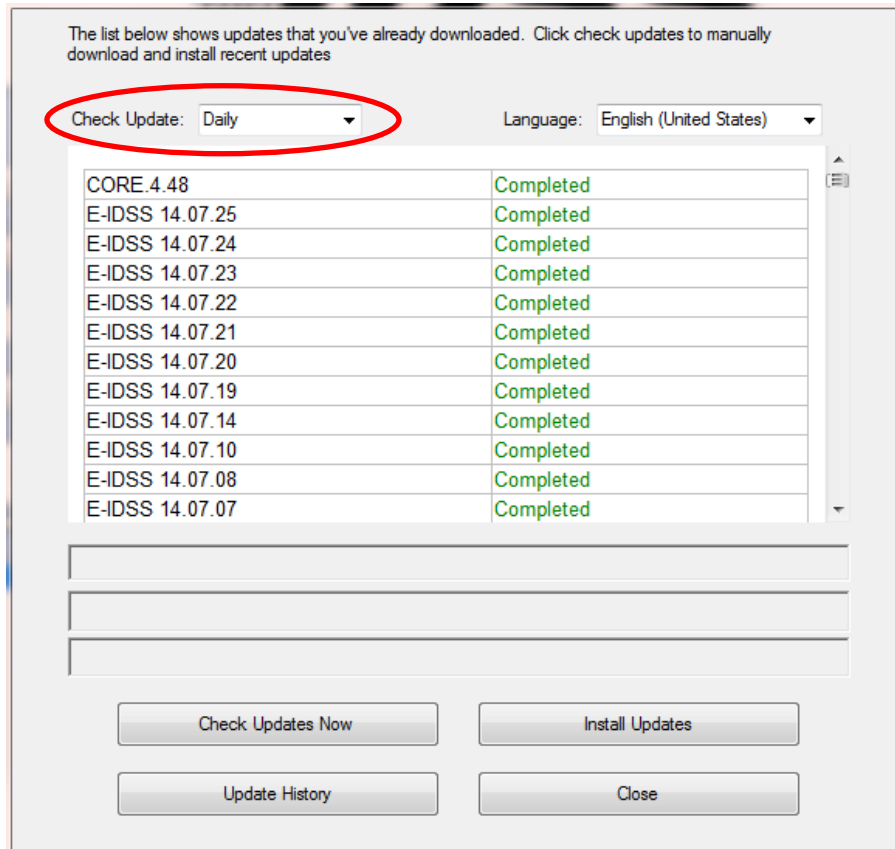
E-IDSS software updates are imperative to service repairs and software operation. Through this bulletin, I would like to address the importance of continued E-IDSS software updates which will help with new engine communication and information while avoiding programming and functionality issues when using the E-IDSS tool.

The E-IDSS tool software is built to allow for automatic software updates anytime the computer with the E-IDSS software is turned on and connected to the internet. To check the current status of the E-IDSS software while ensuring that it is at the latest calibration, please follow the items below.

1. Open the E-IDSS software and select the Internet Updater Button



2. A second window will open which allows the user to check for software updates, confirm the current E-IDSS software level and verify the Check Update selection. Selecting Daily in the Check Update selection drop-down menu ensures that the E-IDSS checks for software updates each time the computer is turned on with an internet connection. This selection is HIGHLY recommended.



3. To ensure that the software is at the latest calibration, select the Check Updates Now button. This will re-check for the latest E-IDSS software downloads. If any new updates are available, the user will be prompted to download and install these updates. Once the download and installation status reads Completed, the E-IDSS tool is ready to use.

It is highly recommended that E-IDSS computers are updated regularly to avoid service issues in the field or unnecessary repairs. Please regularly update your E-IDSS software to ensure proper Isuzu engine support in the field.

Best Regards,

*Dan Luke*

Service Engineer Instructor