

### HOW TO MEASURE TIRE TREADS

When measuring tread depth, a gauge calibrated in  $\frac{2}{32}^{\text{nd}}$  of an inch should be used and visually inspected. Any tire worn so that less than  $\frac{2}{32}^{\text{nd}}$  of an inch of tread depth remains when measured at the lowest points in any two adjacent major grooves in the center of the tire is cause for rejection.

Any tire with tread wear indicators worn so that the tread wear indicators contact the road in any two adjacent major grooves in the center or middle of the tire is cause for rejection.

**MAJOR TREAD GROOVE:** Grooves in the tread design molded through the complete thickness of the tread rubber running around and/or across the tire surface.

**MINOR TREAD GROOVE:** Remaining tire tread design other than major tread grooves.



Tread Wear Indicators



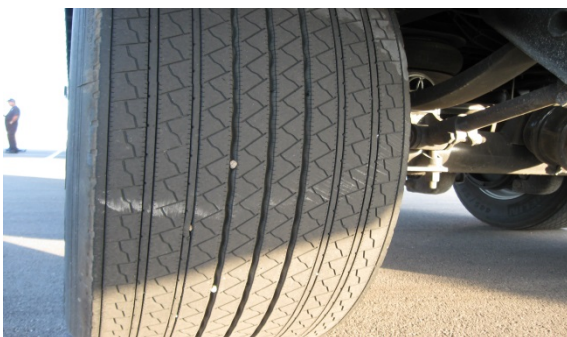
Tread Depth Gauge



Tread Wear Indicators



Motorcycle Tire Wear Indicators



Super Single